

Health and Social Impact Assessment of the South East Qld Regional Plan

Local Government Community Services
Association of Australia National Conference
Melbourne, 28 October 2005



Kate Copeland, Director,
Statewide Health Services
Planning



Queensland Government

Queensland Health

Background to the project

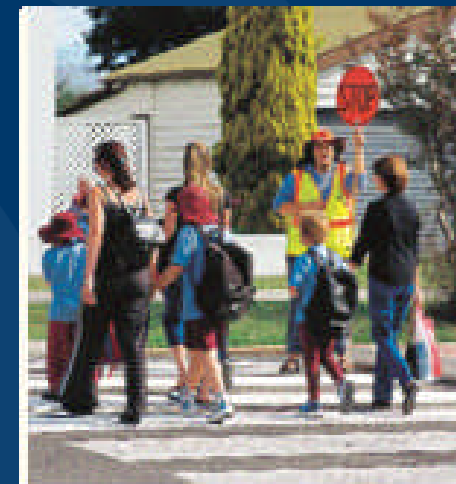
- Triggered by release of draft South East Queensland Regional Plan in October 2004



- **Trials a combined Health and Social Impact Assessment as a methodology for considering regional planning process**

HSIA – key learnings

- Development of a shared understanding of combined HSIA methodology among participants
- Involvement of a wide range of informants & knowledge holders
- Structured approach and successful application of the HSIA methodology
- Getting health on the “map”
- Dialogue between key players
- Responses to the plan
- Tools



HIA & SIA METHODOLOGIES COMPARED

INITIATIVE/PROJECT DESCRIPTION

SCREENING: IS HIA/SIA NEEDED?

SCOPING: INITIAL SCAN OF IMPACTS

HIA: determinants of health

SIA: indicators of social impacts

HIA: HEALTH RISK APPRAISAL

SIA: PREDICT IMPACTS

- profiling/baseline conditions

- evidence base/ social indicators

HIA: RISK EVALUATION

SIA: ASSESS SIGNIFICANCE

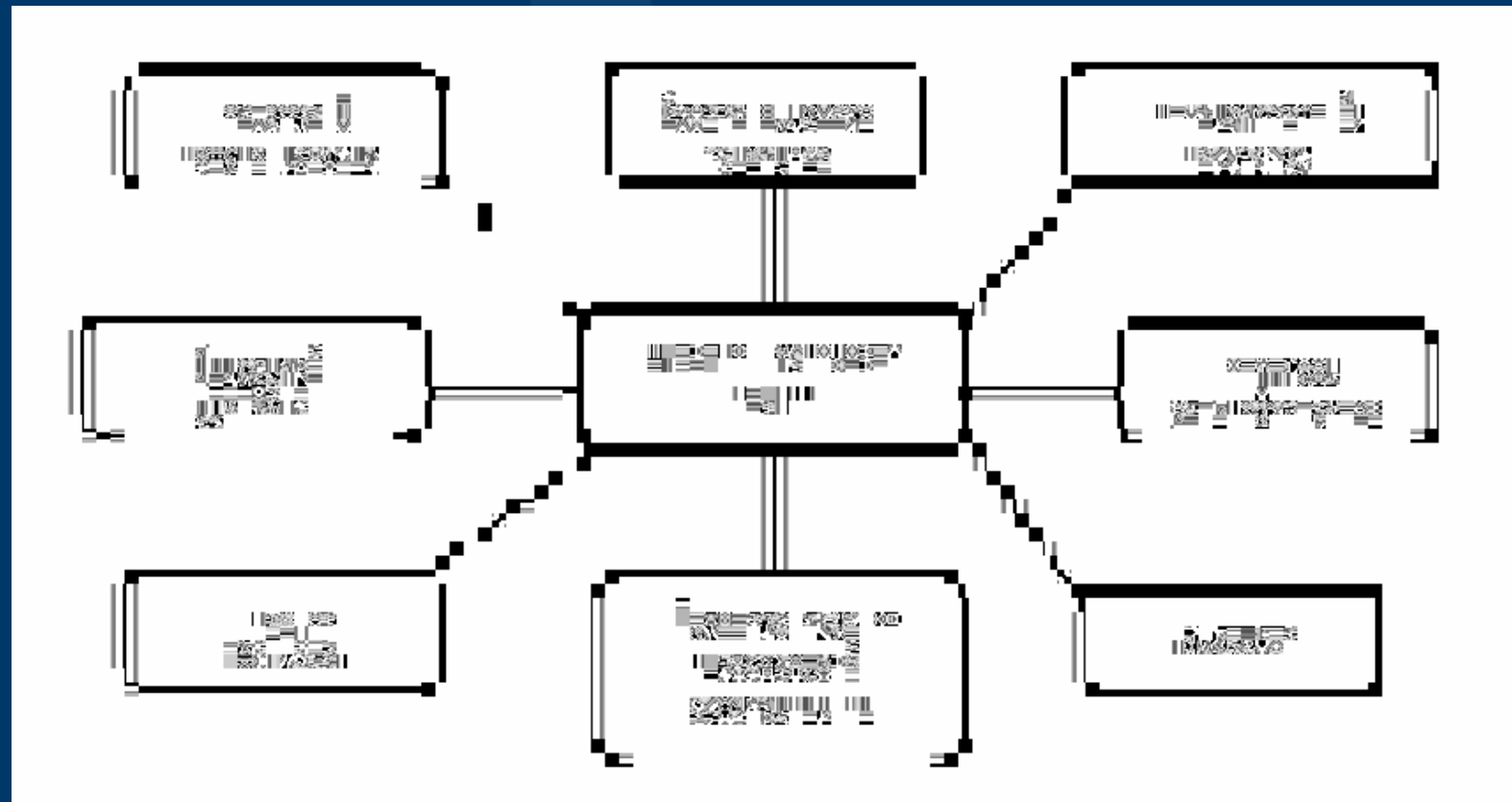
SIA: PROPOSE ALTERNATIVES

HIA: RISK MANAGEMENT

SIA: MITIGATION/ENHANCEMENT

MONITORING

Determinants of health



Challenges and limitations

- Broad nature of policy and resulting analysis
- Reliance on existing research
- Data availability and gaps
- No community input
- Limited exploration of particular groups

- **Documented known relationships between health, wellbeing and environmental conditions**
- **Reviewed changes proposed in Regional Plan**
- **Reviewed existing social and health conditions in SEQ against relevant determinants**
- **Analysed likely impacts**
- **Developed tools and responses**

What determinants did we investigate in the region?

- Population characteristics and groups
- Social and economic characteristics
- Lifestyle & behaviours
- Access to services
- Natural & built environment

What were the main impacts identified?

- **Income, accessibility, housing, social connectedness and physical activity are critical**
- **Much depends on how it is implemented**

Conclusions...directions...

- **More consistent reporting of social and health data to support planning**
- **Greater capacity to integrate health and social considerations**
- **Improved leverage for social infrastructure funding & co-ordination**
- **Greater capacity for multi-disciplinary planning**
- **Greater capacity to integrate statutory and other planning processes**

Priorities for inter-agency collaboration:

- **Social infrastructure benchmarking, co-ordination and funding**
- **Capacity building**
- **Regional affordable housing & ageing strategies**
- **Matching jobs & population growth**
- **Specific projects (e.g. Ripley Valley, TOD Taskforce)**
- **Monitoring and reporting**

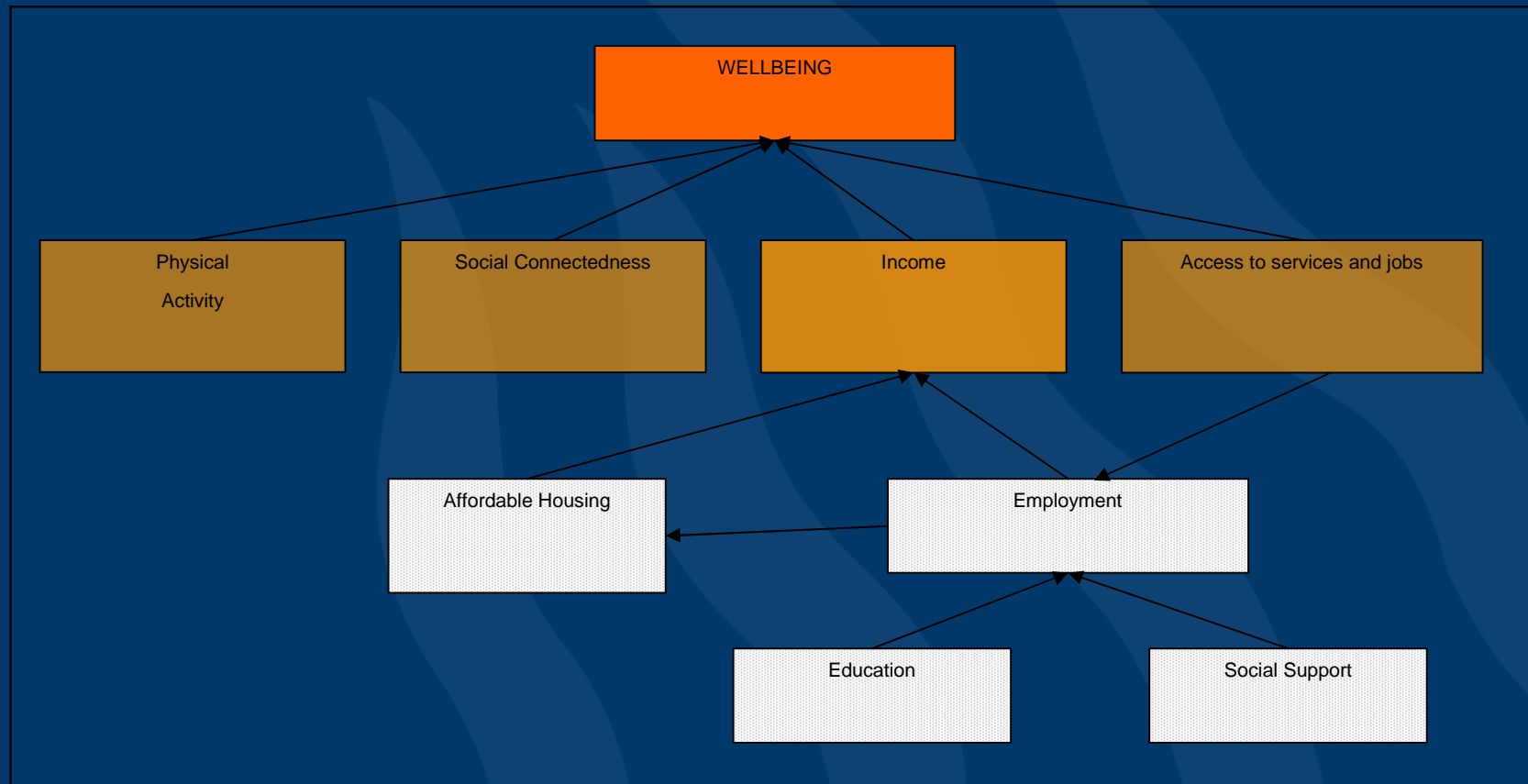
Monitoring and research:

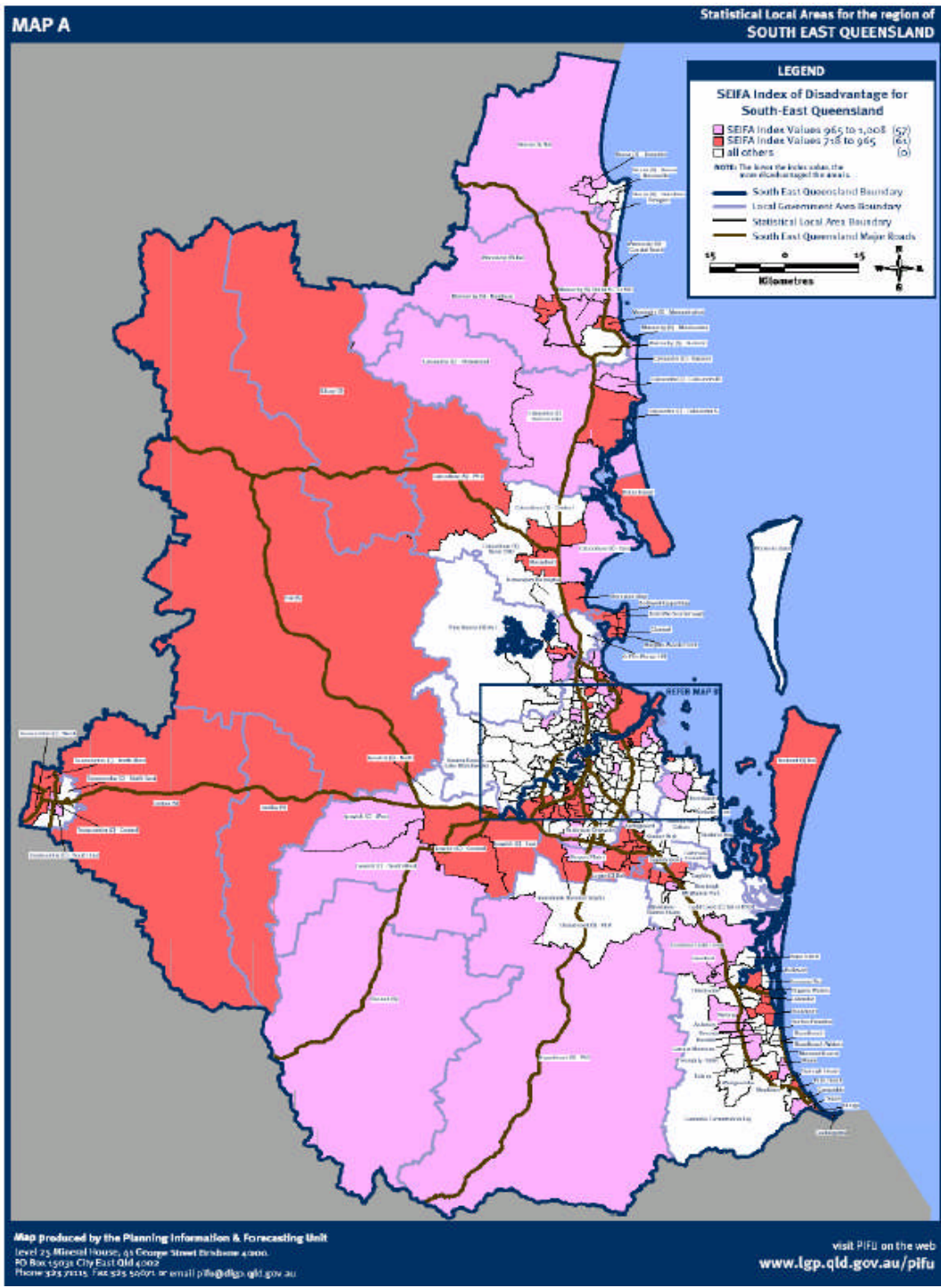
- Regional Health and Social Conditions Monitoring Project
 - Consistent indicators
 - Consistent geographic areas
 - Integrate existing data
 - Feed into SEQ State of the Environment report
- Research
 - Impacts of total water cycle management systems
 - Health status of urban Indigenous people
 - Impacts of medium/high density housing & neighbourhood design
 - Impacts of ageing in insecure housing

What are the tools and how can we use them?

- Raise the profile of health and wellbeing
- Develop a shared understanding of health and wellbeing
- Support improved planning and development decisions
- Support health and social planners in providing advice and making comment on planning processes and outcomes

TOOL: Summary Of Known Relationships Document





TOOL: Existing Conditions in SEQ (Baseline report)

TOOL. SEQ Regional Plan - Impact Analysis

- **Detailed assessment of Regional Plan's proposals, rationale and evidence to support analysis**
- **Useful as resource for advice to Local Growth Management Strategies, Planning Schemes and impact assessment**

TOOL: Guidance for planning instruments

Provides information for preparing/responding to:

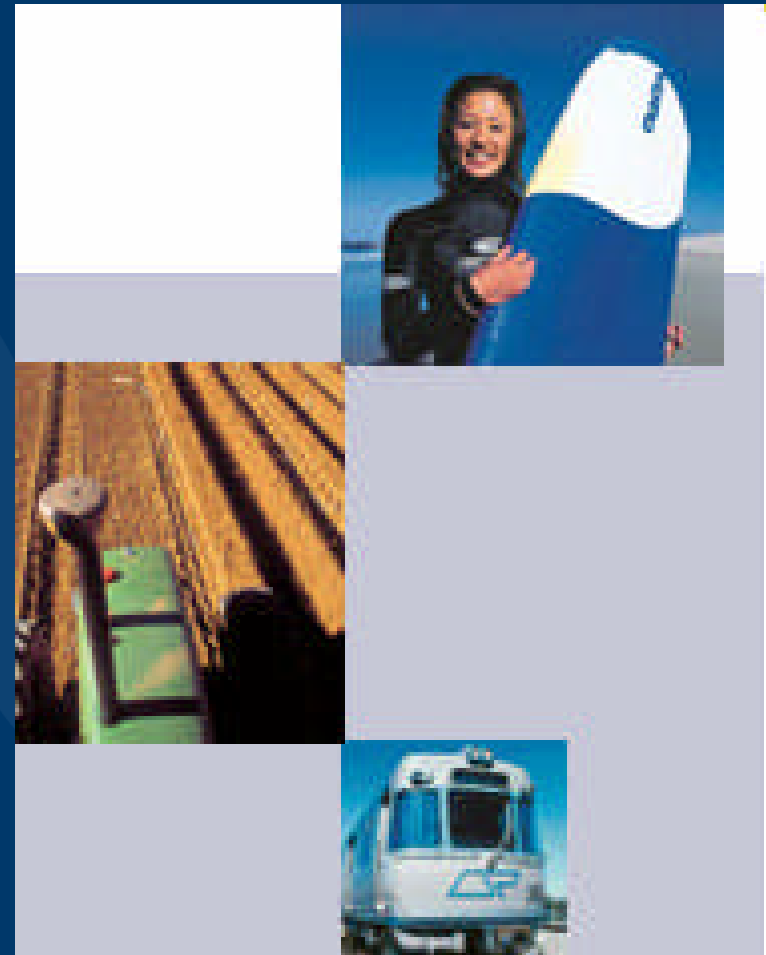
- Local Growth Management Strategies
- TOD Guidelines
- Greenfield Structure Plans
- Activity Centre Master Plan
- State Government Action Plan

TOOL: Guidance for Impact Assessment

- **Guidance on assessing health and social impacts from the development of infrastructure proposals eg transport infrastructure**

Next steps

- Release of report and tools
- Negotiate with stakeholders to progress key responses
- Planning for service delivery
- Evaluation
- Explore links with other projects



Thank you

For further information
please contact Queensland
Health's Statewide Health
Services Planning Branch on
(07) 3239 0922



*Note: Guides and tools will be released
in the near future to all Local Govt's
and key stakeholders in SEQ*